

The measure of a safety-first principle

Of all the basis activities, we give the highest priority to the safety-first culture, securing the safety of society as well as workers by improving facilities and technologies.

Safe reservation of nuclear power generation

We strive for the safe and stable operation of our nuclear power plants, making safety our top priority. We work hard to guarantee the prompt and transparent disclosure of nuclear-related information and to implement, maintenance and quality assurance activities appropriately so that local citizens can feel secure and rely on us.

Safety Management System

Quality Assurance Activities

To achieve safe and stable nuclear power plant operations, we created a quality assurance management system, conducting safety and quality assurance activities frequently and accurately. Our President heads the system to ensure compliance with all applicable laws, and with the commercial specifications known as the "Quality Assurance Regulations Concerning Safety at Nuclear Power Stations (JEAC4111)."

Development of a culture of nuclear safety

We recognize that a culture of safety starts with "the attitude of each employee and the culture of the workplace". We make every effort to create a positive workplace culture, with a management system emphasizing the worksite and fostering smooth communications among business partners.

We enhance communications through round-table conferences involving employees and management personnel, workplace meetings, and active reassignments between our head office and plant sites.

To activate communication with business partners, we perform site meetings and patrols, and hold round-table discussions together with various participatory events.

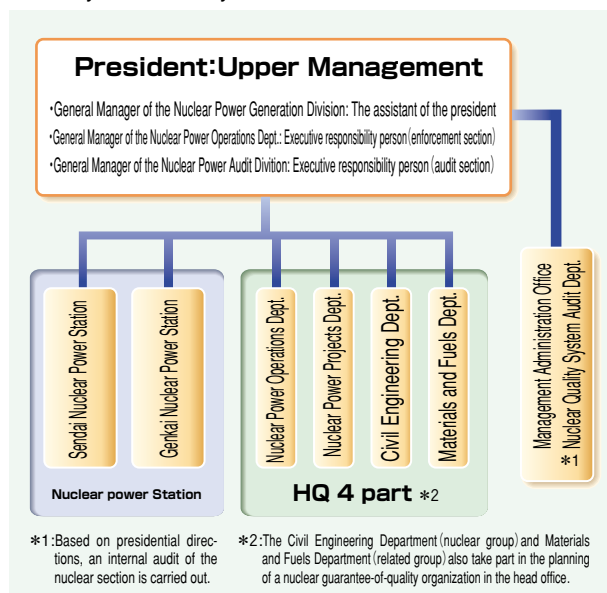
Maintenance of nuclear plant equipments

Appropriate maintenance and inspection in compliance with guidelines

In order to guarantee the safety and reliability of our nuclear power plants, it is critical to perform appropriate maintenance operations at the facilities, enabling plant equipments to smoothly perform its predetermined functions.

The contents and frequency of facility maintenance and inspections are based on existing laws, and on the commercial specifications known as the "Maintenance and Inspection Regulations for Nuclear Power Stations (JEAC4209)." We thoroughly review the results of our maintenance activities, amending our operations whenever necessary.

Quality Assurance system



The measure for technical succession

In order to maintain our technical capabilities involving plant operation and maintenance, on-the-job training is conducted intensively inside the plants. We also actively utilize the training simulator and maintenance training facilities at the Genkai and Sendai Nuclear Power Station to teach practical skills and techniques.



Activity item for FY2006	The main action plans for FY2006
Placing priority on securing safety during work and with equipment	<input type="radio"/> Thorough efforts toward prevention of industrial accidents caused by every concerned, including our business partners <input type="radio"/> Thoroughness of measures for preventive maintenance of nuclear power stations <input type="radio"/> Enhancing Quality Assurance activities of nuclear power stations
Knowledge of electric safety and improving the safety of our products and services	<input type="radio"/> Strengthening of inspections of equipment and the public electric shock accident prevention PR
Development of employee's awareness toward safety and health	<input type="radio"/> Gradual introduction of the Occupational Safety and Health Management System <input type="radio"/> Substantial measures for mental health <input type="radio"/> Continuous implementation of the measures toward the prevention of health disorders caused by serious overwork

Steady implementation of preventive maintenance construction

For the prevention of problems in our nuclear power plants, we implement troubleshooting countermeasures based on industry mishaps both in Japan and overseas, and we closely monitor the aging of plant facilities. Based on acquired knowledge, we actively perform preventive maintenance, such as the repair and replacement of plant equipment.

Radiation control

Management of radiation of radiation exposed worker

In order to reduce exposed dose of the workers as much as possible, we have automated and implemented remote conversions of work, and reduced the spatial dose by water chemistry. We installed a shield in workplace.

The radiation dose of the worker in FY2005 was an average of 1.0 millisievert (mSv) on an average, It was much lower than 50mSv which is a legal dose limit per year in FY2005.

Environmental radiation management around a nuclear power station

At nuclear power stations, the level of radioactivity in the environmental samples of seawater and agricultural and marine products are measured in addition to regular environmental monitoring of the ambient radiation dose. Presently, there has been no effect on the environment with the operation of our nuclear power stations.

The radiation exposure of people living near power stations is less than 0.001 msv per year, which is much lower than both the legal dose limit of 1 msv per year and the annual 0.05 msv target set by the Nuclear Safe-

ty Commission.

Concerning environmental radiation, the data is released in real time on our website.

http://www.kyuden.co.jp/nuclear_real (in Japanese)

Management and Disposal of Radioactive Wastes

Gas and liquid radioactive wastes are processed appropriately with the wastes treatment equipment in the facilities. The influence of gas and liquid wastes on regions surrounding power plants is less than several% of natural radiation activity.

After the solid waste is stored strictly in the solid waste storage located within power station sites, it is then transferred to the low level Radioactive Waste Disposal Center of Japan Nuclear Fuel Limited, where it is buried and stored until the waste ceases to have any effect on the human living environment.

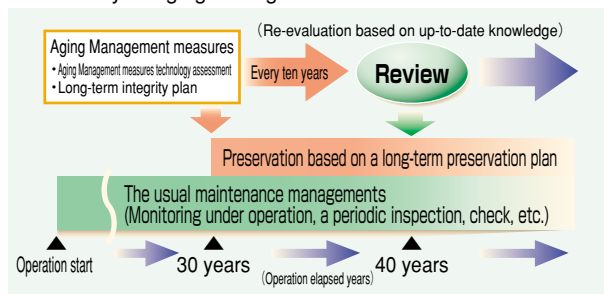
Aging Management Measures

Management measures to address the aging of Genkai-1, which has been operational for thirty years, were considered in response to the government report, "Basic Guidelines for aging management measures." We verified that we can continue to operate Genkai-1, though the possibility of long-term operations need to be assessed carefully. Our conclusions were included in a report submitted to the government in December 2003.

The government evaluated our report as follows: "The evaluation method was appropriate, and operations may continue provided that the long-term maintenance program is executed appropriately."

We will determine when to begin our long-term maintenance program and will implement annual inspections in a strategic manner.

Summary of Aging Management Measures



Nuclear disaster prevention

At our nuclear power stations, we adopt thoroughgoing safety measures to prevent accidents that might cause radiation disasters in the surrounding environments. Therefore, the possibility of such disasters occurring is extremely low. But to cope with such disasters quickly, national and local governments and operators of nuclear facilities develop emergency plans according to the Basic Law for Emergency Preparedness and the Special Law of Emergency Preparedness for Nuclear Disasters. All three work in concert to intensify nuclear disaster prevention systems and activities.

In addition, our company participates in nuclear disaster prevention training in Saga prefecture and Kagoshima prefecture every year. We have established emergency headquarters in our nuclear power stations, and we proceed to conduct training to enhance information communications and environmental monitoring during emergencies.



The measure of Occupational Safety and Health

We have dubbed “achieving zero industrial accidents and establishing measures for occupational safety and health” as our health and safety philosophy, promoting the safety of the employees and improving health maintenance of both mind and body.

Also, in aiming for a workplace climate where safe hygienic activity is a top priority, we activate the function of safety and health committee.

The measure towards zero industrial accidents

Knowing that most of disasters are caused by human error and removing dangerous factors can lower this portion, it is important to

raise our own awareness for safety and we have taken measures toward zero industrial accidents by continuing to remove dangerous factors in advance.

However, disaster has a tendency to rebound that alternates between advancing and retraining, so not only are consciousness and disaster awareness necessary, but it is also important to know the potentially dangerous factors. So we have introduced the “Occupational Safety and Health Management System,” which the Ministry of Health, Labor and Welfare recommends for FY2006.

We also promote meeting that we put an anticipating risk activity, and carry out some projects for prevention of traffic accidents by prac-

tically using a frequent traffic accident map.

Assurance of Healthy mind and body, and establishment of a comfortable workplace

Under the situation of social workplace environment, we continue to assist in illness prevention measures and self health promotion, taking preventive measures for ensuring mental health and removing health obstacles from serious overwork. These are all part of our commitment to create a comfortable workplace where stress and fatigue can be reduced.

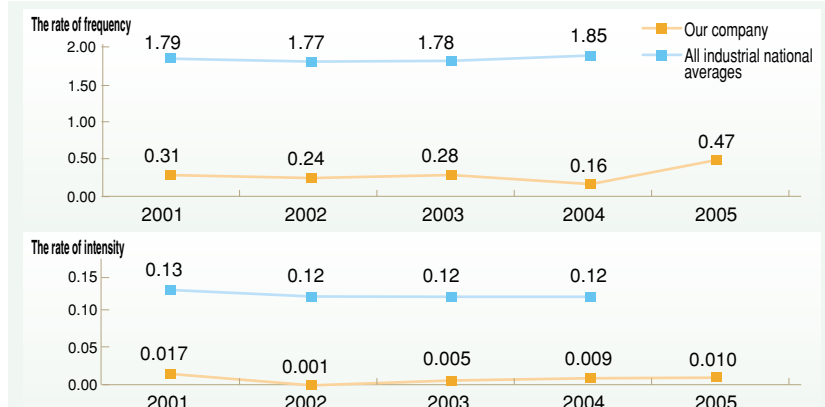
▼ Whole company management-for-safety-and-sanitation plan for FY 2006



▼ Number of Disaster cases with respect to business (main classified by cause) (cases)

FY	2001	2002	2003	2004	2005
Material cause	2	1	3	4	8
Human cause	13	10	22	19	18
Third party behavior	8	7	1	4	6
Total	23	18	26	27	32

▼ Accident frequency ratio* severity rate of industrial accident frequency*, and the rate of intensity



Healthy management measures

□ In order to attain fullness and strengthening of the education for the prevention and early detection in mental health, we are strengthening consultation organization, educational expansion, practical use of a stress diagnostic system, and the medical staff.

About mental health education, training seminars are held with the introduction of the technique for coping with stress, including practical use of an external lecturer with expansion of the training opportunity.

□ For measures towards the health obstacle prevention by extreme work conditions, the advice and instruction by the occupational physician or medical staff will be at the workplace to carry out individual interviews for advice or consultation.

□ In order to promote the labor health administration measures in alignment with the new VDT guideline, the interview and the medical checkup by the medical staff based on an oral consultation vote are carried out.

□ Regarding the measures for smoking at the workplace based on the “health regime” and “the guideline for measures against smoking at the work place,” in principle the workplace is considered to be all non-smoking, so smoking rooms are established under the prevention of smoking measures.

□ In order to aim at the substantial measure against illness prevention, while holding various health lectures, measures will be carried out for promoting self health.

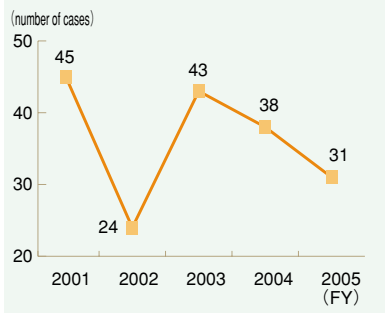
*Glossary / *Labor Accident Ratio: Number of accidents during paid holidays per 1 million hours worked.
*Labor Accident Severity: Number of work days lost due to accidents per 10 million work hours.

Promotion of strict enforcement of the safe activity for suppliers

Although we have been supporting and assisting our suppliers in their safe activities, some serious accidents such as electric shocks and falling have occurred during our suppliers' work. For this reason, we have encouraged our suppliers' safety work, and that the measure for calamity prevention is strengthened.

Specifically, for the summer safety promotion period and the winter safety promotion month, we have administered patrols for our suppliers and held meetings to discuss accident prevention measures and other aspects of safety promotion, raising with our suppliers' consciousness of safety work suppliers.

▼ The number of construction consignment and contract disaster cases



▼ Public electric shock accident



Measures of prevention of public accident

The measure of public electric shock accident prevention

During our public electric shock accident prevention PR periods which we have for three times a year, we also hold public electric shock accident prevention warnings for engineering and crane companies, educational institutions, municipalities, and other electricity-related organizations.

In addition, we promote the safe usage of electricity on our homepage by publishing the "Q&A on the usage of electricity" and handing out "Denki Shittoku Bon (Know your electricity)" pamphlets to propose safety measures and verification of dangerous areas by inspecting safe installments.

We will continue to promote PR activities by using various media and prevention of public electric shock accidents before they happen.

< [Q&A on the usage of electricity] website in Japanese >
http://www.kyuden.co.jp/life_living_safe_index

▼ Spring public electric shock accident prevention PR poster



□ Spring public electric shock accident prevention PR
 PR activities with emphasis on the public electric shock accident prevention using carp streamer (Koi Nobori) are developed for three months from March to May.

□ Safe electric use month
 In order to deepen an understanding about the safety of electric use and to aim at prevention of an electric accident before it happens, August is set as the safe electric use month by the appeal of the Ministry of Economy, Trade and Industry. Many electric related organizations including each electric power company unite to take part in the activities.

□ Winter public electric shock accident prevention PR
 PR activities with emphasis on the public electric shock accident prevention in using kite flying and construction sites are developed for three months from December to February.

□ PR at the time of extraordinary disaster, such as a typhoons
 Using TV commercial and newspaper ads, public electric shock accident prevention at the time of a typhoon and power failure caused by falling objects are some of our PR activities.

Topics

Our company CM "asking for cooperation from our customers during a typhoon-Fujin (god of the wind) version" was awarded the bronze prize for "the 45th advertisement contest which was beneficial for the consumer (November, 2005) .

