



Maintaining Our Safety-First Principle

The top priority in all our business activities is to ensure safety for society and employees by constantly endeavoring to improve our facilities and technologies.

Ensuring Nuclear Power Safety

We strictly regulate our nuclear power stations to maintain safety based on rules and regulations covering everything from design and construction to operations, including official safety reviews, construction project approvals, preoperational tests and regular inspections.

To further improve safety and reliability, we established a quality management system, which the president heads. This system takes every possible step to ensure safe and stable nuclear power operations through quality assurance activities.

We underpin nuclear power safety measures by fostering a corporate culture that makes safety our top concern. We also draw on the latest domestic and overseas intelligence on nuclear safety issues, including those related to earthquakes.

Nuclear Power Station Safety Framework

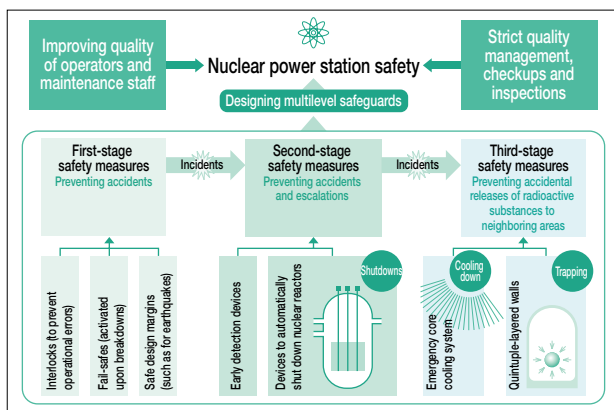
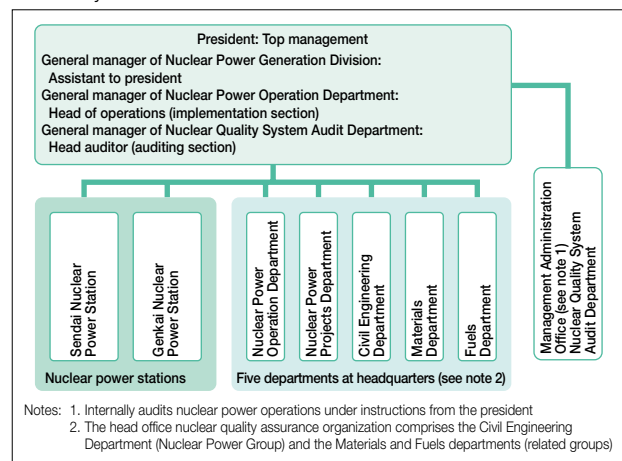
We maintain multilevel safety measures to prevent nuclear power station accidents, such as accidental releases of radioactive substances.

Safety Management System

Quality Assurance Activities

Based on our quality management system policies, we comply with laws and ordinances and undertake security and quality assurance activities to ensure safe and stable operations.

Quality Assurance Structure



Fostering a Culture of Safe Nuclear Power Operations

We believe that a culture of safety stems from individual awareness and how it blends into the workplace. We strive to build work site-focused operational management systems and work sites that ensure safety through proper communications and information both internally and with business partners.

We maintain extensive internal communications through conferences with executives and work site meetings. We keep close ties with business partners by jointly implementing pre-work meetings and site patrols.

My CSR Efforts

Using the Safety-First Policy to Ensure Safe and Stable Nuclear Power Operations

My job is to help ensure that operations at Genkai Nuclear Power Station are safe and stable. This entails regularly checking that pumps and valves function normally and replacing equipment. I also detect abnormalities as early as possible by monitoring meters and gauges, and making patrols to inspect each instrument. Nuclear power offers outstanding supply stability, a lower environmental impact and it is economical, which is why it is a key power source for Kyushu Electric. I will continue to work hard with our safety-first policy uppermost on my mind on behalf of local residents.



No. 2 Power Generation Division,
Genkai Nuclear Power Station
Tetsuya Yamashita

Maintaining Nuclear Power Facilities

● Inspecting and Repairing Facilities in Line with Maintenance Management Rules

To ensure the safety and reliability of our nuclear power stations, we maintain and manage facilities and equipment in keeping with statutory and private-sector inspection and repair standards.

We improved our maintenance program by deploying new techniques as part of the full-fledged launch of a new inspection system in FY2009. We will further enhance nuclear power safety and reliability with these new techniques, while continuing ongoing efforts to improve maintenance.



Regular inspection

● Implementing Preventive Maintenance

We refer to nuclear power station accidents in Japan and abroad to take thorough preventive steps and monitor the aging of our facilities. We also draw on our own knowledge to maintain and upgrade facilities and equipment.

Keeping Our Technological Edge

The technological capabilities of our employees are essential in keeping our nuclear power stations operating safely.

On-the-job training is the main tool for imparting operational and maintenance technologies. Operational simulators and maintenance facilities at the training centers of our Genkai and Sendai nuclear power stations help us retain our practical technological capabilities.



Simulator room at the training center of Genkai Nuclear Power Station

Managing Radiation

● Controlling Occupational Radiation Exposure

We minimize occupational radiation exposure at our nuclear power stations by shielding workers and having them perform tasks through remote control or automated systems.

In FY2008, the average occupational dosage at our facilities was 1.2 millisieverts (mSv), far lower than the legally permitted 50 mSv.

● Managing Environmental Radiation

We constantly monitor radiation levels around our nuclear power stations and disclose real-time data on our Japanese Web site. We regularly measure the radioactivity of samples of soil, seawater, agricultural and marine products. We have found no environmental radiation from our facilities.

The annual dosage of people living around our nuclear power stations is under 0.001 mSv. This is well below the legal maximum of 1 mSv per year and the Nuclear Safety Commission's target of 0.05 mSv annually.

▼ Web site disclosing dosage data (image shows the layout at Genkai Nuclear Power Station)



● Managing Radioactive Wastes

On-site facilities treat the radioactive gaseous and liquid wastes created by our nuclear power stations and safely dispose of them.

We store and strictly supervise solid wastes on-site and then ship them to Japan Nuclear Fuel Limited's Low-Level Radioactive Waste Disposal Center in Aomori Prefecture. The center stores the waste underground.

Preventing Nuclear Disasters

Our nuclear power stations are fully prepared for emergencies.

● Firefighting Preparedness

We maintain 10-person firefighting units at our nuclear power stations. Five of those firefighters are on station around-the-clock, with another five ready to participate in any emergency work. Each facility has a chemical fire engine and a water truck with a portable motor pump.

Satellite phones and other communications devices link these units directly with local fire brigades. Our units work closely with these brigades while conducting regular drills and other training.



Nuclear Disaster Drills

Our nuclear power stations maintain rigorous safety measures to minimize disaster risks. As part of ongoing efforts to ensure preparedness, we maintain contingency response plans with national and local government bodies in line with the Special Law of Emergency Preparedness for Nuclear Disasters and the Disaster Countermeasures Basic Act.

We participate in annual nuclear disaster drills in Saga and Kagoshima prefectures. Headquarters and our nuclear power stations have emergency response departments that regularly issue bulletins and monitor the environment.



Ensuring Safe Products and Services

Preventing Electric Shocks in Public

We hold three publicity campaigns annually to help reduce the number of electric shock incidents. During Power Safety Month, we highlight this issue to engineering and construction firms, crane companies, educational institutions, municipalities and other organizations.

Other safety awareness tools include the Know Your Electricity pamphlet, which we distribute to new customers, and a Web site answering common questions on power usage. We recommend that customers check their facilities for potential problems and use their own safety procedures.



Public electric shock prevention posters

▼Number of Public Electric Shock Incidents

	FY2004	FY2005	FY2006	FY2007	FY2008
Number	3	2	0	1	0

Initiatives at Kyushu Meter & Relay Engineering Corporation

Group company Kyushu Meter & Relay Engineering Corp. specializes in maintaining, calibrating and manufacturing power meters. It holds in-house seminars based on ISO 9001 quality management systems, and handles employee self-assessments to familiarize all employees with the need to ensure the safety of meters used in power bill transactions. This company reviews customer complaints and explores remedial actions to ensure ongoing improvements.

Kyushu Meter & Relay Engineering Corp. will continue to refine its technologies and services to build customer credibility.



Maintaining Safe and Healthy Work Environments and Occupational Safety

To ensure employee safety and maintain and promote physical and mental health, we instituted Companywide health and safety management policies, objectives and plans in keeping with a basic philosophy that makes health and safety main priorities. We seek to eliminate all occupational accidents and maintain the mental and physical well-being of employees while providing comfortable workplaces. We accordingly deploy diverse Companywide health and safety activities in which management and employees collaborate.

We encourage our people to care for each other, such as such by checking each other's physical condition every morning, and are expanding the role of the Safety and Health Committee in building workplaces that prioritize employee safety and mental and physical health.

Eliminating Occupational Accidents

We are preparing our Occupational Safety and Health Management System to achieve zero accidents. We implement hazard prediction activities and the practice of pointing at objects to check safety before and after performing tasks. We also provide education and training to improve compliance with laws and ordinances, enhance safety awareness and help prevent occupational accidents.

▼ Numbers of Occupational Accidents by Category

	FY2004	FY2005	FY2006	FY2007	FY2008
Electric shocks	2	1	1	2	2
Traffic accidents	8	10	7	12	5
Falling objects	1	2	0	0	0
Others	16	19	16	29	17
Totals	27	32	24	43	24

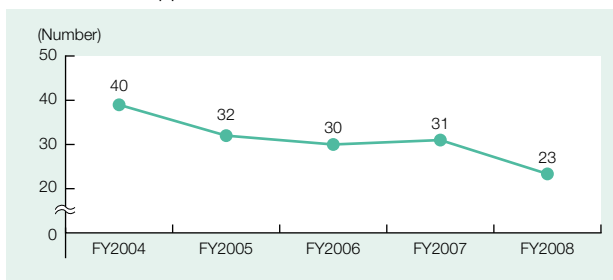
Note: The others category includes falls, tool mishandling and collisions with facilities equipment.

Mandating Supplier Safety

We support and instruct suppliers on their safety activities.

For example, we hold safety months in summer and winter, during which we patrol supplier work sites. We also meet with suppliers to discuss accident prevention and other safety issues.

▼ Number of Supplier Accidents



Ensuring Mental and Physical Well-being and Comfort

We create workplaces that minimize fatigue and stress, and maintain numerous programs to safeguard employees, complementing traditional measures to prevent diseases. The programs include helping employees build healthy bodies, notably by providing health guidance and offering mental health care. We also deploy initiatives to prevent illness from overwork, prevent eyesight damage from video display terminal usage and shield against passive smoking.

Overview of Mental Health Initiatives

Level 1 Prevention	<ul style="list-style-type: none"> Educate and enlighten (instruct on recognizing and addressing stress, and identifying and assisting others in stress) Measure occupational stress and build frameworks to improve working environments
Level 2 Early detection, and response and alleviation	<ul style="list-style-type: none"> Create a climate in which employees can identify when they experience stress (through interviews to assess health and simple occupational stress diagnoses) Make it easy for employees to seek help (through occupational therapists, mental health medical counselors and external consultancies) Encourage occupational therapists and industrial doctors follow up with sufferers of stress to quickly identify and treat their problems
Level 3 Helping employees to return to work	<ul style="list-style-type: none"> Provide support during treatment (liaise with case physicians, families and supervisors and regularly communicate with sufferers) Assist employees when they return to work (initially shortening working hours, then prohibiting overtime and business trips) Provide work site support (liaise with supervisors and follow up with physicians and occupational therapists)

Our Industrial Physicians

Rie Yoshikawa,
Industrial Physician, Health Office

We help maintain and enhance employee health, which is fundamental to the Company's operations. Full-time occupational therapists at the head office, branch offices and power stations focus on services to assess the health of each employee. While collaborating with work sites to prevent and cure diseases, we aim to help create comfortable workplaces by exploring ways to collectively and individually to prevent overwork and safeguard mental health.

Opinion



From left in the back row are head office occupational therapists Ms Suga, Ms Arishima, and Ms Koga. From left in the front row are Dr. Fujishiro, supervising industrial physician, and Dr. Yoshikawa, head office industrial physician