

I Promotion of Environmental Management

Kyushu Electric Power is aware that dealing with environmental problems is a fundamental precondition of its own existence and business activities. In doing so, the company will execute corporate activities that help to build a sound environment while satisfying the social commitments expected of a corporation, as well as contribute to the community's well-being. For this purpose, the company has been promoting environmental manage-

ment in its entire business activities and implementing environmental activities based on the annual Environment Action Plan, results of which are publicized in the "Environment Action Report". This issue of the Report summarizes the environmental activities conducted in accordance with the Fiscal 2002 Environment Action Plan (formulated in March 2002) as well as their results and developments.

1 Environmental Management Framework

1 Environmental policy

Kyushu Electric Power has established the Kyushu Electric Power Environment Charter to define the stance and direction of environmental activities to be pursued. The Kyushu Electric Power Group Environment Philosophy has also been developed for group companies to set forth principles of their commitment

to environmental activities, as well as the Kyushu Electric Power Group Environment Policies, which set out specific guidelines for implementing such activities. Kyushu Electric Power shall actively implement environmental activities based on these policies to ensure outstanding environmental management.

Corporate Philosophy

- 1 Kyushu Electric Power shall keep energy aglow forever.
- 2 Kyushu Electric Power shall maintain close contact with the community at all times and act in pursuit of valuable social goals.
- 3 Kyushu Electric Power shall create a dynamic corporate culture by being a step ahead of the times.

Kyushu Electric Power Environment Charter

Towards an Environmentally Friendly Corporate Stance

1 The company shall, in all its corporate activities, recognize the importance of maintaining awareness of environmental conservation needs.

◎ Kyushu Electric Power fully realizes that dealing with environmental problems is a fundamental precondition for its own existence and business activities.

2 In all its corporate activities, the company shall make concerted efforts to contribute to a sound environment.

- ◎ Strive to prevent global warming and to conserve nature and the environment.
- ◎ Actively implement environmental conservation programs that contribute to the community's well-being.
- ◎ Reduce waste output and encourage use of waste as a resource, thus promoting a recycling-based society.

3 The company shall, in all its corporate activities, promote the disclosure of environment-related information.

◎ Promote ease of public access to business-related environmental information and provide opportunities for communicating with many members of the general public.

February 15, 2001

President

※ See Related Information [P63](#)  for Kyushu Electric Power Group Environment Philosophy and the Kyushu Electric Power Group Environment Policies.

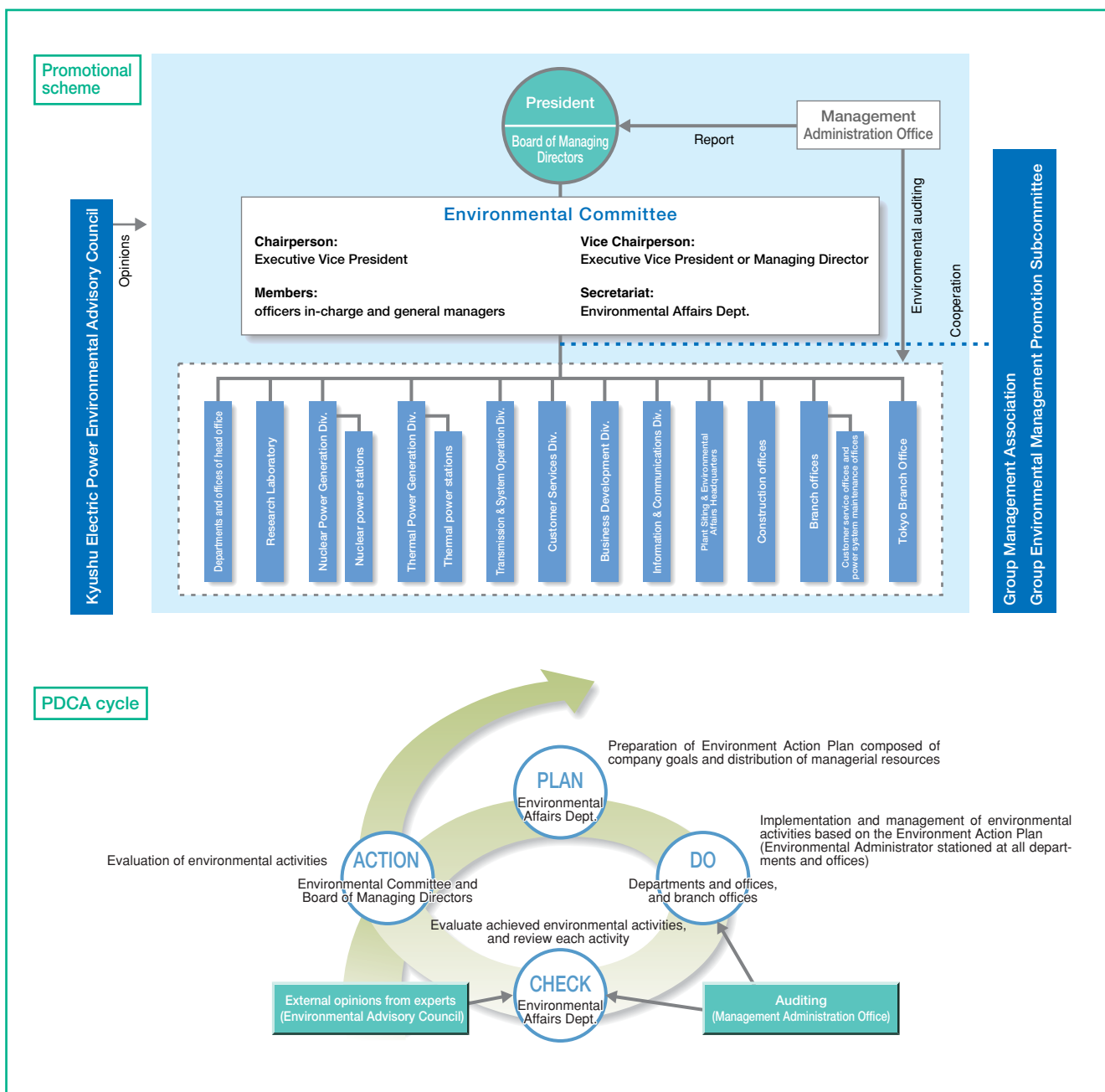
2 Promotional scheme

Kyushu Electric Power has structured a company-wide scheme to promote the implementation of environmental management.

- An Environmental Committee has been established to better review the environment activity strategies of Kyushu Electric Power as a whole. The committee's agenda is authorized by the Board of Managing Directors and will be adopted as the company's environmental management guidelines.
- The Kyushu Electric Power Environmental Advisory Council, composed of experts in various fields, has been established for external evaluation of our environmental activities. Internal evaluation is conducted by the Management Administration Office. We will ensure that the results of both internal

and external evaluations are reflected in future activities.

- Further, the Group Environmental Management Promotion Subcommittee of the Group Management Association (former Group Company Environmental Management Promotion Association, reorganized in May 2002) has been set up to promote the environmental management of the Kyushu Electric Power Group as a whole. The Subcommittee serves to discuss and draft common objectives for the Group as well as action plans. [See Related Information P63](#) Meanwhile, these activities are subject to evaluation by the Kyushu Electric Power Environmental Advisory Council.



Environmental Committee

Kyushu Electric Power strongly promotes environmental management by building an environmentally conscious administrative system closely tied to company management.

- The Environmental Committee discusses and drafts environmental activity strategies and environment action plans, such as the extent of managerial resources to be distributed to environmental management.
- The Environmental Committee is chaired by the Executive Vice President and composed of officers in-charge and general managers.
- Matters deliberated by the Environmental Committee are first submitted to the Board of Managing Directors, then adopted within the business plans of each division, department and branch office, and implemented company-wide in the form of specific environmental activities.
- Environmental administrators (161 administrators as of June 2003) have been appointed for all departments and offices to supervise and fully enforce environmental activities.

Kyushu Electric Power Environmental Advisory Council

Kyushu Electric Power attaches great importance to external evaluation from experts in promoting environmental management.

- The Kyushu Electric Power Environmental Advisory Council was established in April 2001 to evaluate the environmental management efforts of Kyushu Electric Power and the Group companies.
- The council is composed of nine experts in various fields and from each prefecture in Kyushu.
- The feedback for the 3rd Advisory Council is listed on p.35.

Environmental management system

Kyushu Electric Power aims to build a company-wide environmental management system (EMS) that is both efficient and effective.

- ISO 14001 certification was acquired at the model office selected, taking into account the significantly different functions of the company's operational establishments, e.g. branch offices, power stations, power system maintenance offices and customer service offices.
- An ISO-based system has been applied to all thermal power stations by the end of Fiscal 2001.
- As for branch offices, customer service offices, power system maintenance offices and nuclear power stations, etc. based on the ISO-based system adopted by the model office, an ISO-based system is planned to cover all sites during Fiscal 2002 and 2003. Among them, the system was implemented at 51 sites in Fiscal 2002.
- As for the Head Office, an ISO-based system was established by the Environmental Affairs Dept. in April 2003, which is to be implemented at all departments and offices, the Education & Training Center and the Research Laboratory by the end of Fiscal 2003.



Environmental Committee (held on August 6, 2003)



Kyushu Electric Power Environmental Advisory Council (held on July 22, 2003)



Regular audit of ISO certification at Omarugawa Hydro Power Plant Construction Office

■ Status of ISO certification at selected model offices

Offices	Certificate acquisition	Operational status in FY 2002		
		Certificate acquisition	Regular audit	Renewal audit
Matsuura Thermal Power Station	July 1997		○	
Sendai Nuclear Power Station	Mar. 1999			○
Hitoyoshi Power System Maintenance Office	Mar. 2001		○	
Omarugawa Hydro Power Plant Construction Office	Aug. 2001		○	
Saga Customer Service Office	June 2002	○		
Nagasaki Branch Office	July 2002	○		

Conformity to environmental regulations

Kyushu Electric Power focuses on "compliance management" to engage in fair business activities based on its corporate ethics, as well as conformity with ordinances. In addition, the company strictly conforms with environmental laws and ordinances, as well as agreements on environmental conservation with related local governments.

- Guidelines for environmental activities and environmental regulations have been established.

[See Related Information](#) **P45** 

- The company has committed no breaches of environmental laws, and no failures have occurred in the last five years. Currently, no legal actions regarding environmental issues are being filed against Kyushu Electric Power.

Emergency measures

Accidents and facility failures resulting from natural disasters can affect the surrounding environment. Kyushu Electric Power prepares for such emergencies by installing and upgrading facilities for disaster prevention, implementing adequate education and training for its staff, and preparing manuals that help responsible staff to better deal with their duties.

- Power stations are under agreement to remain in close contact with their local governments.
- Both the Genkai and Sendai Nuclear Power Stations have a nuclear power training center on their premises. At both training centers, simulation equipment enables trainees to learn from a wide variety of potential dangers by simulating crises that have actually occurred, even outside Japan.
- Each year, the company participates in nuclear power disaster drills held by the local governments of Kagoshima and Saga Prefectures based on the local disaster preparedness plan.

3 FY 2003 Environment Action Plan

Concept of Environmental Management

Building a sustainable society through cooperation with the local community is the fundamental aspect of environmental management. Accordingly, Kyushu Electric Power pursues environmental activities that satisfy society's needs, as well as active disclosure of information.

Establishment of FY 2003 Environment Action Plan

The Fiscal 2003 Environment Action Plan was established in March 2003 based on the external and internal evaluations on the activities carried out under the above concept and the Fiscal 2002 Environment Action Plan. The Fiscal 2003 Action Plan focuses on the following three points.

Three Focal Points for FY 2003 Environment Action Plan Establishment

- 1 Enhance employees' awareness of the importance of environmental activities; encourage them to participate in such activities to further improve corporate value.
- 2 Promote active information exchanges on environmental issues with customers and other stakeholders.
- 3 Promote environmental activities through unified efforts of Kyushu Electric Power Group companies.

Five Core Environmental Action Policies

Promoting environmental management

- Environmental management framework establishment
- Environmental efficiency improvement

Dealing with global environmental issues

- Greenhouse gas reduction
- Promotion of renewable energy sources
- Measures for energy conservation
- Ozone layer protection

Establishing a recycling-based society

- Challenges towards zero-waste
- Promotion of green procurement

Maintaining harmony with the local environment

- Environmental preservation for power plants and substations
- Harmony with the surrounding environment
- Promotion of environmental and recycling activities

Working with society

- Communication
- Community activities
- International cooperation
- Employee awareness enhancement