

III Kyushu Electric Power Group's Environmental Activity Progress

The Kyushu Electric Power Group boasts technologies and expertise accumulated through its operation, and operates in the general energy business, with electricity as its mainstay. It is also engaged in a wide range of businesses such as information and telecommunications, environment and recycling, and lifestyle services. Recognizing environmental conservation as a corporate social responsibility, the group works together on environmental activities in all of these business areas.

1 Environmental Management Framework

The Kyushu Electric Power Group has established an "Environment Philosophy" stating the principle of the group's commitment to environmental activities, and its "Environment Policies" that clarify specific guidelines to implement such activities.

Environment Philosophy

The Kyushu Electric Power Group recognizes the importance of an environmental preservation consciousness in every aspect of energy supply and other businesses, and works towards the realization of an affluent society and better global environment.

May 2002

Environment Policies

- 1 We fulfill our responsibility to society by complying with all environmental preservation laws and regulations.
- 2 For the creation of a recycling-based society, we work to reduce the environmental load through the effective use of energy and resources, as well as the recycling of waste.
- 3 We tackle all environmental issues aggressively and contribute to society through continuous environmental activities.
- 4 We disclose environment-related information and work for improved communication with society.

May 2002

Environmental management promotional scheme

The Kyushu Electric Power Group promoted its environmental management through the Group Management Association and Group Environmental Management Promotion Subcommittee consisting of 27 group companies. With an additional 14 companies as new members, 41 companies have been engaged in environmental activities since Fiscal 2003. Specifically, based on the Group's Environmental Activity Plan, which was discussed and approved by the Group Management Association, each company carries out environmental activities. Their activities are analyzed and evaluated annually by the Group Management Association and the Group Environmental Management Promotion Subcommittee. Then the results are reflected when compiling the plan for the next fiscal year. This PDCA Cycle facilitates the group's effort to spiral up its environmental management.

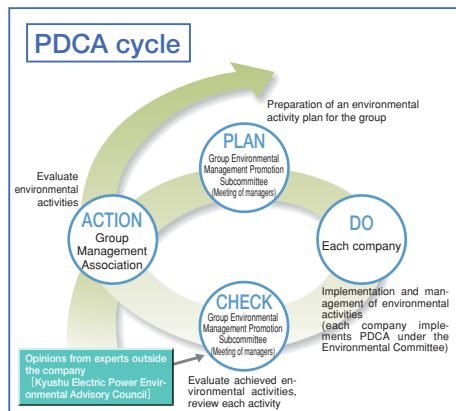
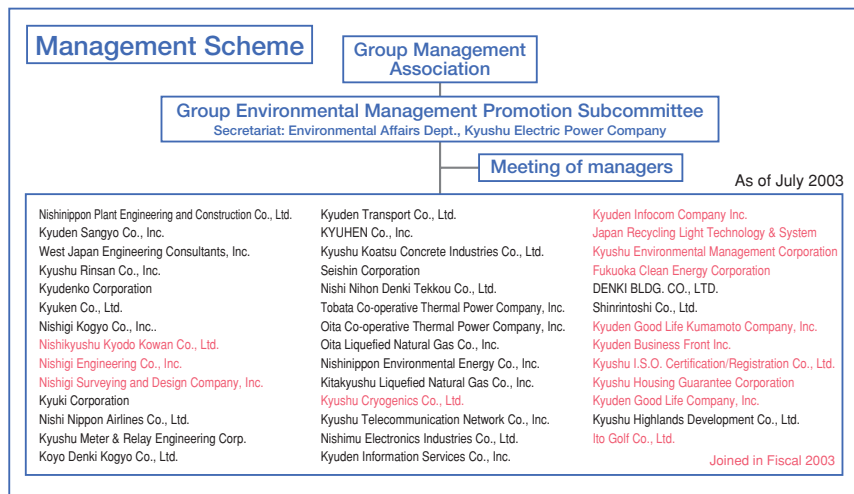
The 14 new members develop a scheme

following the PDCA Cycle including setting up an Environmental Committee, drawing up related rules and establishing a procedure to grasp the environmental load. Then they work on the Group's Environmental Activity Plan step by step.

Kyushu Electric Power Group's standard for EMS formation

In a coordinated effort to promote environmental management, the Kyushu Electric Power Group introduced a unified standard for environmental management system (EMS) formation in stages so that each company could take steps in developing its EMS.

In Fiscal 2002, all 27 group companies established their Environmental Committee, and developed a scheme for the PDCA Cycle on their environmental activities. From Fiscal 2003, based on the Kyushu Electric Power Group's Standard for EMS Formation, each company sets a level relevant to its actual state and then strives for a higher level.












Group Environmental Management Promotion Subcommittee (held on Aug. 7, 2003)

■ Outline of stages of Kyushu Electric Power Group's standard for EMS formation (1)

Stage	State achieved	Evaluation	
		Criterion	Evaluator
Stage 1	Environment policies compiled at the corporate level, and a plan to achieve objectives established. (Environment Policies, Environmental Targets, Management System)	90% or more conformity rate at the 1st stage of EMS formation.	Kyushu Electric Power Co. Environmental Affairs Dept.
Stage 2	Environment policies compiled at the operational office level, and the management framework to achieve the objectives (plan) established. The framework enables document-based implementation and evaluation of activities.	90% or more conformity rate at the 2nd stage of EMS formation.	
Stage 3	A simple system complying with all the requirements stated in ISO14001, Article 17 established at the operational office level. (The stage aimed at ISO14001 certification acquisition)	90% or more conformity rate at the 3rd stage of EMS formation.	
Stage 4	A system fulfilling ISO 14001 requirements established at the operational office level.	90% or more conformity rate at the 4th stage of the EMS formation.	
Stage 5	ISO14001 certification acquired at the operational office level.	90% or more conformity rate at the 5th and 6th stages of EMS formation.	Verification and Registration Agency
Stage 6	ISO14001 certification acquired at the entire company level.		

■ Outline of stages of Kyushu Electric Power Group's standard for EMS formation (2)

Stage		Stage 1	Stage 2	Stage 3	Stage 4	Stage 5	Stage 6
Item	Company	○					○
Level	Head office/operational offices		○	○	○	○	
Stage achieved	<div style="background-color: yellow; padding: 5px;">Environment Policies (Declaration)</div> <div style="background-color: yellow; padding: 5px;">Environmental Objectives</div> <div style="background-color: yellow; padding: 5px;">Management system</div>	Head Office <ul style="list-style-type: none"> • Environment Policies • Objective • Plan • Documents (Scheme) • Activities • Evaluation Operational Offices <ul style="list-style-type: none"> • Environment Policies • Objective • Plan • Documents (Scheme) • Activities • Evaluation ⋮ Operational Offices <ul style="list-style-type: none"> • Environment Policies • Objective • Plan • Documents (Scheme) • Activities • Evaluation 	Head Office <div style="text-align: center;">  <p>Simple Version of ISO14001, Article 17 Requirements</p> </div> Operational Offices <div style="text-align: center;">  <p>Simple Version of ISO14001, Article 17 Requirements</p> </div> ⋮ Operational Offices <div style="text-align: center;">  <p>Simple Version of ISO14001, Article 17 Requirements</p> </div>	Head Office <div style="text-align: center;">  <p>ISO14001, Article 17 Requirements</p> </div> Operational Offices <div style="text-align: center;">  <p>ISO14001, Article 17 Requirements</p> </div> ⋮ Operational Offices <div style="text-align: center;">  <p>ISO14001, Article 17 Requirements</p> </div>	Head Office <div style="text-align: center;">  <p>ISO14001, Article 17 Requirements</p> </div> Operational Offices <div style="text-align: center;">  <p>ISO14001, Article 17 Requirements</p> </div> ⋮ Operational Offices <div style="text-align: center;">  <p>ISO14001, Article 17 Requirements</p> </div>	ISO14001, Article 17 Requirements 4.2 Environmental Policy 4.3.1 Environmental Aspects 4.3.2 Legal and Other Requirements 4.3.3 Objectives and Targets 4.3.4 Environmental Management Program 4.4.1 Structure and Responsibility 4.4.2 Training, Awareness and Competence 4.4.3 Communication 4.4.4 Environmental Management System Documentation 4.4.5 Document Control 4.4.6 Operational Control 4.4.7 Emergency Preparedness and Response 4.5.1 Monitoring and Measurement 4.5.2 Nonconformance and Corrective and Preventive Action 4.5.3 Record 4.5.4 Environmental Management System Audit 4.6 Management Review	
Environmental management Level		30	40	60	90	95	100
ISO14001		—			ISO-based system (self-declaration)	Certification acquired	

■ ISO14001 certification acquisition

Through independent commitment by group companies, four of them have already acquired ISO 14001 certification.

Company	Date	Level
Kyudenko Corporation	Dec., 1999	Head Office only
Nishinippon Environmental Energy Co., Inc.	Oct., 2000	Entire company
Kyuden Sangyo Co., Inc.	Dec., 2002	Environment Dept. only
Kyuki Corporation	Mar., 2003	Entire company

■ Progress in EMS formation

Kyuki Corporation

To be an eco-friendly "company of the 21st Century"

Environmental problems such as global warming have become serious social issues that need urgent improvement. Now it is required to shift from a conventional social system based on mass production, mass consumption and mass disposal to one based on recycling. Against such a background, Kyuki Corporation believes that each of our

employees should be aware of the necessity of environmental activities, strongly promote and carry out any possible activities to preserve the environment, and that it is our duty to pass on a better environment to the next generation. To be an environment-friendly company of the 21st century, it established a company-wide environmental management system and acquired ISO14001 certification in March, 2003, and is continuously enhancing environmental activities.

Main environmental activities

- ☆ Promoting environmental activities by holding regular meetings of the Environmental Management Council
- ☆ Developing a method to manage substances subjected to PRTR, and ensuring a full grasp of and control over the amounts used and transferred
- ☆ Implementing environmental evaluation at the designing stage to consider energy and resources conservation in manufacturing products
- ☆ Promoting green procurement of office supplies and OA equipment
- ☆ Promoting waste recycling and paperless documentation at the company
- ☆ Regular cleaning of roads adjacent to the company compound and active involvement in community volunteer cleaning activities

環境方針

基本理念

- ・ 私たちは、地球環境にやさしい“21世紀型企業”を目指し、環境保全と企業の成長を両立させ、広く社会に貢献します。
- ・ 私たちは、すべての企業活動において、環境問題を重点課題とし、環境に配慮した製品やサービスを提供します。
- ・ 私たちは、次の世代により良い環境を残すため、企業としてはもちろん従業員一人ひとりが環境負荷の低減に努めます。

行動指針

1. 環境保全に関わる法規制や協定を遵守し、社会的責任を遂行する。
2. 環境活動の継続的改善を行うとともに、環境汚染の予防に努める。
3. 企業活動の環境影響に応じた環境目的・目標を設定し、その運用を評価して必要な見直しを行う。
4. 循環型社会の形成を目指して、エネルギーや資源の有効利用、廃棄物の再資源化に努める。

2002年11月1日
株式会社キューキ
代表取締役社長 小野 耕一

Nishinippon Environmental Energy Co., Inc.

People, earth and an affluent future

Recognizing that global environmental preservation is the first priority for all people, Nishinippon Environmental Energy Co., Inc. believes that it can contribute to environmental preservation through its business activities. For this purpose, the company established an environmental

management system and acquired ISO14001 certification for all its business activities on October 6, 2000. It continues to work on effective energy use, waste reduction and natural resources conservation mainly through recycling, promotes environmental preservation activities and strives to contribute to building a sustainable society. Furthermore, the company launched a consultation business on ISO14001 certification acquisition in Fiscal 2002, based on the standpoint that the knowledge and skills accumulated through its business activities should be given back to society for wider utilization.

Main environmental activities

- ☆ Total abolishment of specific Freons use
- ☆ Reduction of power consumption at its office
- ☆ Reduction of paper use through recycling and efforts towards a paperless workplace
- ☆ Promotion of green procurement of office supplies
- ☆ Proposing eco-friendly and effective energy use
- ☆ Promoting biomass energy business

Oita Co-operative Thermal Power Company, Inc.

Commitment to environmental conservation activities

Recognizing the significance of its business impact on the environment and efforts to tackle environmental issues, Oita Co-operative Thermal Power Company, Inc. drew up Environment Policies on April 15, 2003 and set forth Environmental Management Rules on April 17. The company held two Environmental Management Committee meetings in May and adopted an Education Plan and Environ-

mental Activity Plan based on the Environment Policies. Following the Environment Activity Plan, the company sets targets such as reducing copy paper use and power consumption at the office, practicing appropriate waste disposal and recycling, thus encouraging environmental activities. Also, the company complies with relevant laws and regulations as well as agreements with related municipalities, while it strives for environmental preservation through continuous improvement of its Environmental Management System.

Targets

- ☆ Reduction of copy paper use 【10% year-by-year reduction】
- ☆ Reduction of power consumption at the office 【1% year-by-year reduction】
- ☆ Reduction of chemical use 【10% year-by-year reduction】
- ☆ Zero emission of greenhouse gases (CFCs and SF₆)
- ☆ Environmental activities to achieve the set targets including discussions on waste recycling of EP ash, sludge cake and paper

環境方針

環境理念

当社の事業活動が環境に与える影響及び環境保全活動への取り組みの重要性を認識し、より良い地球環境の実現に向けての環境管理活動を推進する。

環境方針

1. 当社の事業活動が環境に与える影響を把握し、環境マネジメントシステムの継続的改善を図り、環境保全に努める。
2. 環境保全に関わる法規制及び関係自治体との協定を遵守し、社会的責任を遂行する。
3. 循環型社会の形成を目指し、エネルギー及び資源の有効利用並びに廃棄物の適正な処理と再資源化に努める。



2003年4月15日 大分共同火力株式会社 代表取締役社長