

3. Developing a Company-wide Environmental Management System

Kyushu Electric Power aims to develop the environmental management system (EMS) in all facilities that is both efficient and effective. ISO14001 certification was acquired at the model offices selected, taking into account the significantly different functions of our operational establishments, e.g. branch offices, power stations, power system maintenance offices and customer service offices. A system conforming to ISO14001 has been developed and applied to other facilities, based on achievements made by model offices.

(1) ISO14001 acquisition

In July 1997, ISO14001 was granted to our Matsuura Thermal Power Station, the first such certificate ever to be granted to an electric power company in Japan. Since then, the certificate has been granted to the Sendai Nuclear Power Station, Hitoyoshi Power System Maintenance Office and Omarugawa Hydro Power Plant Construction Office. The Saga Customer Service Office joined the group in June and the Nagasaki Branch Office in July of 2002, completing the acquisition of certificates for all model offices.

Offices with ISO14001 certification

Office name	Date of acquisition
Matsuura Thermal Power Station	July 1997
Sendai Nuclear Power Station	March 1999
Hitoyoshi Power System Maintenance Office	March 2001
Omarugawa Hydro Power Plant Construction Office	August 2001
Saga Customer Service Office	June 2002
Nagasaki Branch Office	July 2002



Audit of ISO certification at Saga Customer Service Office



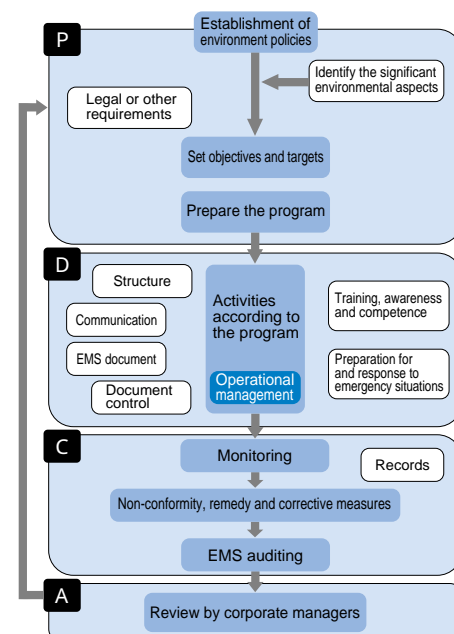
ISO certificate award ceremony, Nagasaki Branch Office

(2) Company-wide application of an ISO-based system

The ISO-based system to be applied in each office aims to promote environmental management in a caring, positive and effective manner, and to steadily raise the level of environmental activities by following the PDCA cycle. After introducing the system, offices set environmental activity targets such as for energy conservation and zero-waste, and implement those activities under the guidance of the environmental administrators in a unified effort.

What is an ISO-based system?

It is an environmental management system that satisfies all the requirements of the ISO14001 standard and is adapted to the actual situation of the offices. To bring all offices to the level of those that acquired the ISO14001 certificate, audit results from the model offices for each business area are given as feedback to the system.



ISO-based system application

An ISO-based system was applied to all thermal power stations by the end of fiscal 2001.

Gradual application of the system started in April 2002 at other branch offices, customer service offices, power system maintenance offices and nuclear power stations. Completion is aimed for fiscal 2003 for all offices.

Nine offices started the system application in April 2002: Iizuka, Yame, Yanagawa, Futsukaichi, Goto, Usa, Tamana, Kanoya customer service offices and Nagasaki Power System Maintenance Office



Introductory training at Iizuka Customer Service Office

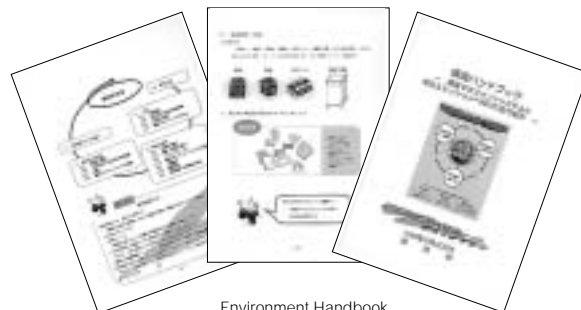


Environment policies for Shin-Kokura Power Station

At offices where environmental management is applied, introductory training is provided to all staff for better understanding of the ISO14001 standard and for the smooth application of the environmental management system.

Enhancement of employee awareness

To ensure the effectiveness of the environmental management system and zero-waste measures, the "Environment Handbook" is handed to all employees to enhance their understanding.



Environment Handbook

(3) Internal environmental audits

To ensure the proper operation and maintenance of the environmental management system within each office, internal environmental audits are conducted periodically and results and matters that require improvement are reported to company managers.

Special training for internal environmental auditors is provided to auditors who are from offices with ISO14001 certificates or the ISO-based system. The training is to improve the level of the internal environmental auditors and is given by an instructor from outside the company (Kyushu I.S.O. Certification/Registration Organization Co., Ltd.). The first training was provided in June 2002, where 21 auditors participated and received a certificate of completion. Training in fiscal 2002 will include approximately 200 auditors.



Training for the internal environmental auditors

Kyushu I.S.O. Certification/Registration Organization Co.,Ltd. (QICO)

Kyushu Electric Power established Kyushu I.S.O. Certification/Registration Organization Co., Ltd. in February 2002 with the cooperation of its Group companies. Its main business is registration, auditing and seminars for ISO quality and the environmental management systems (ISO9001 and 14001).