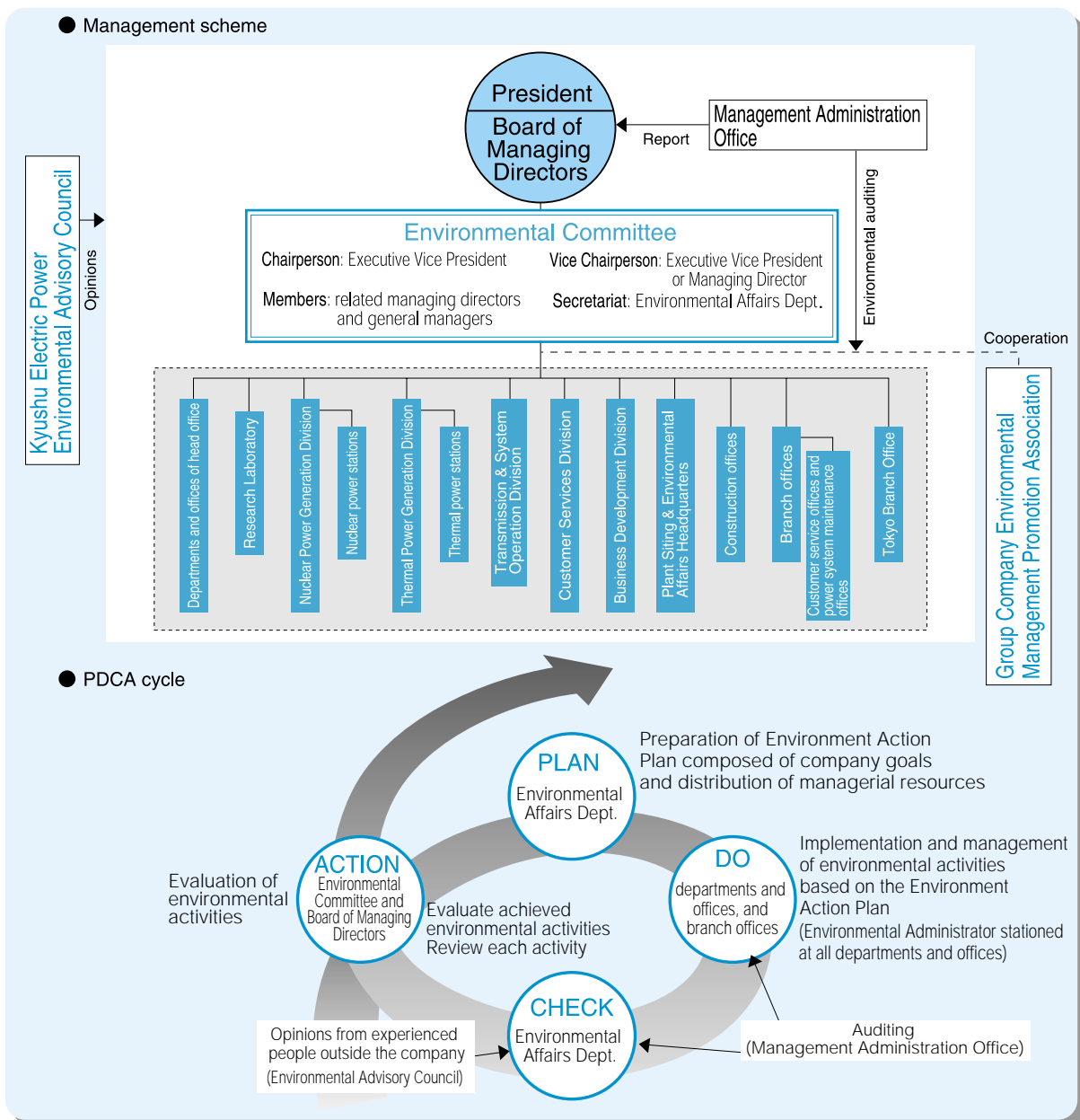


2. Promotional Scheme

Kyushu Electric has structured a company-wide scheme to promote the implementation of environmental management.

- An Environmental Committee has been established to better review the environment activity strategies of Kyushu Electric as a whole. The committee's agenda is authorized by the Board of Managing Directors, and will be adopted as the company's environmental management guideline.
- The Kyushu Electric Power Environmental Advisory Council, consisting of experts in various fields, has been established to better facilitate and respond to feedback on corporate efforts in environmental management.
- The results of environmental activities conducted at Kyushu Electric will be reviewed by the Management Administration Office. A Plan-Do-Check-Act cycle (PDCA cycle) will also be established.
- Further, a Group Company Environmental Management Promotion Association has been established to study and develop environmental conservation strategies using management resources held by Kyushu Electric group companies. The association will promote the environmental management of the Kyushu Electric group as a whole.



(1) Environmental Committee

Kyushu Electric promotes environmental management by building an environmentally conscious administrative system that is closely tied to company management.

The Environmental Committee discusses and drafts environmental activity strategies and environment action plans, such as the extent of managerial resources to be distributed to environmental management.

*Note: The Environmental Problems Investigation Committee was reorganized into the Environmental Committee in April 2001.

The Environmental Committee is chaired by the Executive Vice President and composed of related managing directors and general managers.

Matters deliberated by the Environmental Committee are first submitted to the Board of Managing Directors, then reflected within the business plans of each division, department and branch office, and implemented company-wide in the form of specific environmental activities.

Environmental Administrators were appointed in fiscal 2001 for all departments and offices to supervise and fully enforce environmental activities.

(2) Kyushu Electric Power Environmental Advisory Council

Kyushu Electric is committed to listening to customers' opinions, to promote environmental management.

Established in April 2001, the council supports this principle and serves as an external evaluator for Kyushu Electric's environmental management.

The Kyushu Electric Power Environmental Advisory Council is composed of eight experts in various fields and from each prefecture in Kyushu.



Kyushu Electric Power Environmental Advisory Council (held in August 31, 2001)

(3) Environmental Management System

Kyushu Electric aims to build a company-wide environmental management system (EMS) which is both efficient and effective.

A model office will be selected for each business area and acquire ISO14001 certification, since the functions of branch offices, power plants, power system maintenance offices and customer service offices vary considerably. A system conforming with ISO (EMS) will be developed and deployed company-wide according to achievements made by these offices.

In July 1997, ISO14001 was granted to our Matsuura Thermal Power Station, the first such certificate ever to be granted to an electric power company in Japan. Currently, each of our thermal power plants employs an ISO-based system based on that of the Matsuura Thermal Power Station.

ISO14001 was granted to the Sendai Nuclear Power Station, Hitoyoshi Power System Maintenance Office and Omarugawa Power Station Construction Office (hydroelectric) in March 1999, March 2001 and August 2001, respectively. Kyushu Electric plans to deploy an ISO based system at Genkai Nuclear Power Station and in 17 power system maintenance offices.



Inspection of ISO certification (Omarugawa Power Station Construction Office)

Nagasaki Branch Office and Saga Customer Service Office plan to acquire ISO certification in 2002. An ISO-based system that suits the structure of each office will be implemented at all offices by fiscal 2004.