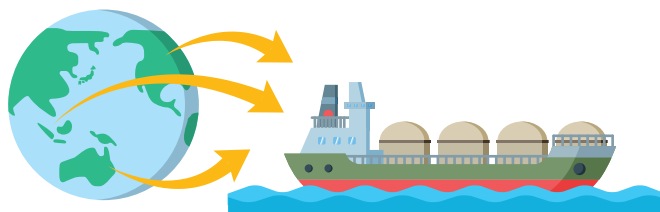


Environmental Loads Resulting from Business Operation

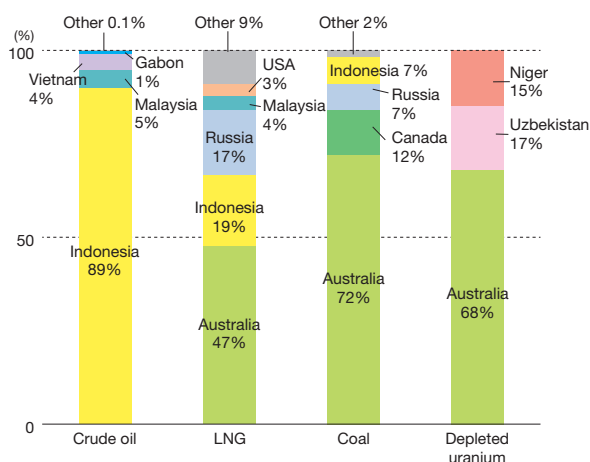
Main Business Operations

Fuel procurement

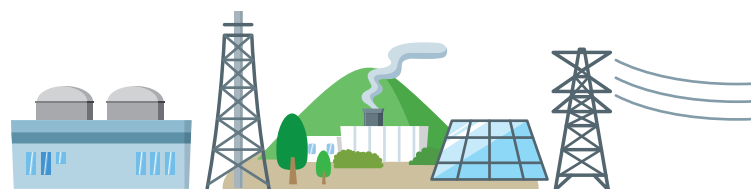


To further strengthen **competitiveness** and **flexibility** in **fuel procurement**, Kyushu Electric Power is engaged in **diversification of fuel procurement**, participation in **resource development and production projects** and the introduction of **fuel trading** (adjustment of fuel volume and price management). We strive for **cost reduction** in fuel transportation by using our **own LNG tanker** and chartered ships for shipping.

Fuel Procurement Status (FY2017)

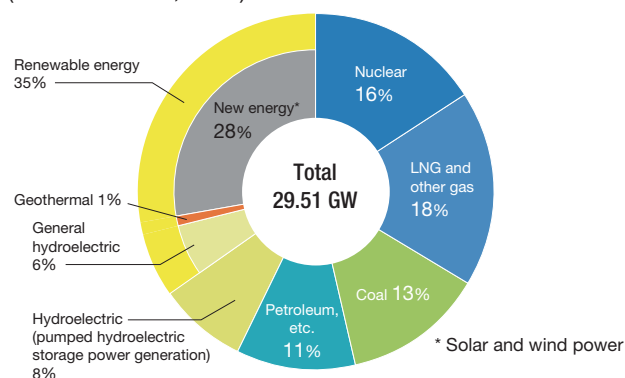


Power generation



In order to secure a **stable supply of energy over the long term**, **counter global warming**, and **provide electric power at low cost**, we generate power while taking the environment into account and using a balanced combination of various power sources. To this end, we employ a wide range of approaches, including promoting nuclear power predicated on safety, **actively developing renewable energies** such as solar, wind and geothermal power, using **these renewables to the maximal extent**, and **improving the efficiency of thermal power**.

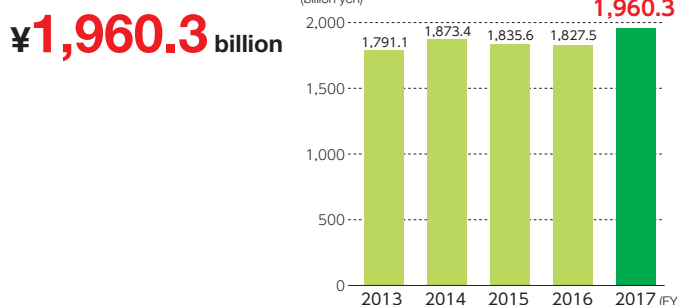
Composition of Capacity for All Facilities (GW) (Including Power Purchased from Other Companies) (as of March 31, 2018)



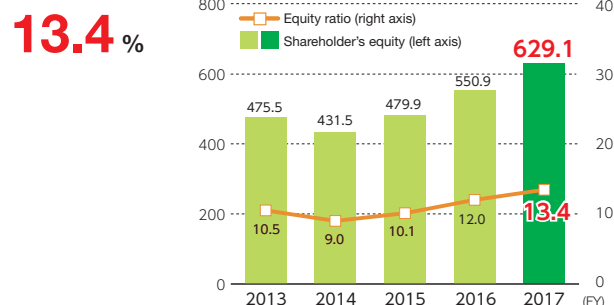
(Note) Energy source composition for the company's own facilities. Please see the Kyushu Electric Power website for information about the retail power business guideline-based power supply structure for electricity sales volume.

Main Financial Indicators

Sales (operating revenues)

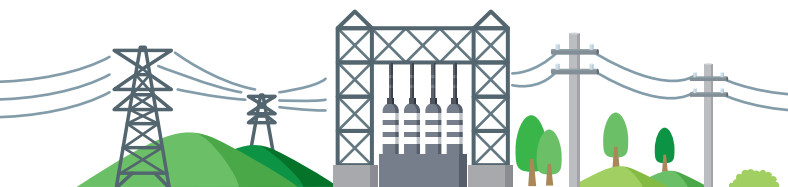


Equity ratio



Business and Environmental Targets for 2018 and Beyond

Power transmission and distribution

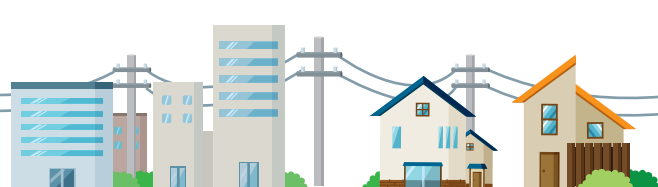


We deliver electricity by transmitting it at high voltage from power stations to substations, lowering the voltage at substations, and sending it along distribution lines to places such as homes and factories. To be able to **deliver a low-cost, stable electricity supply** to support Kyushu's industries and lifestyles, we **operate a stable electricity system** and **preserving steady transmission and distribution facilities**.

■ Power Transmission, Transformation and Distribution Equipment (as of March 31, 2018)

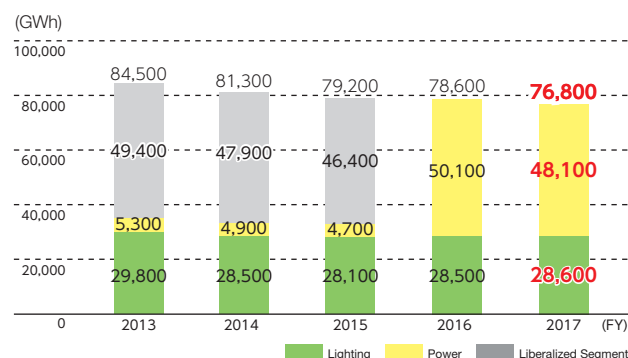
Transmission	Length of transmission lines		10,773 km
	Supporters	Steel towers	approx. 25,000
		Others (concrete poles, etc.)	approx. 42,000
Transformation	Number of substations		596
	Capacity		74,430,000 kVA
	Length of distribution lines		141,730 km
Distribution	Supporters	Concrete poles	approx. 2,411,000
		Others (steel towers, etc.)	approx. 42,000

Energy services



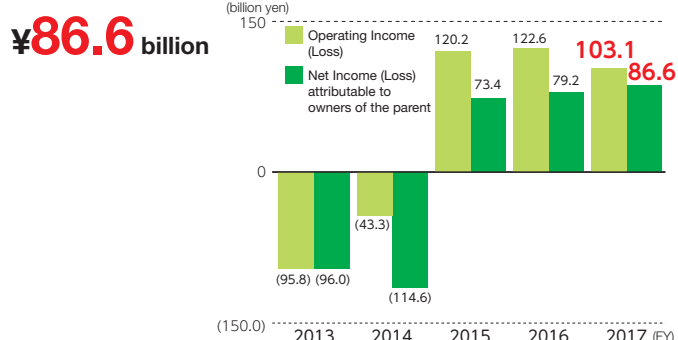
We provide **various energy services** that respond to the diverse needs of customers, including proposals for rate plans and services meeting the requirements of household customers and **one-stop energy services** for corporate customers.

■ Electricity Sales Volume



Note 1: Specified-Scale Demand is 6,000 V or higher at standard voltage and 50 kW or higher of contracted power
 Note 2: Display categories changed from fiscal 2017

Net Income (Loss) attributable to owners of the parent



Ratio of electricity business in sales (Includes intra-company transactions)

