

# Value Creation Process

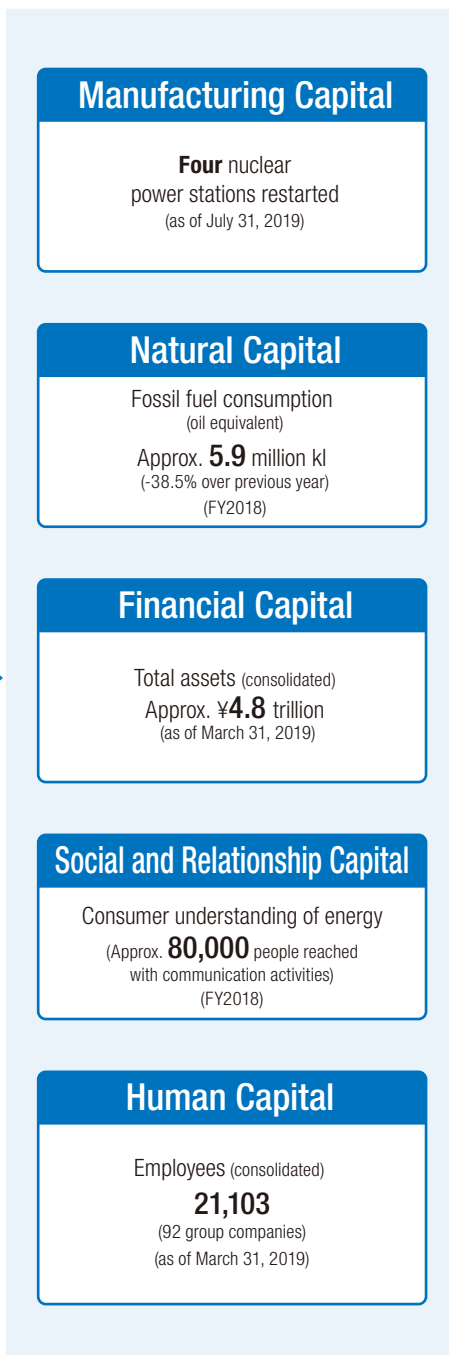
Make a brighter future for generations to come.

The Kyuden Group's Mission is to contribute toward the realization of a comfortable and environment-friendly lifestyle today and for generations to come. In addition to continuing to provide environment-friendly energy, as a regional enterprise throughout each prefecture in the region, we are working together with local communities, exchanging knowledge and expertise, and proactively tackling the challenges posed by new issues. In this way, we are expanding and enhancing our corporate value.

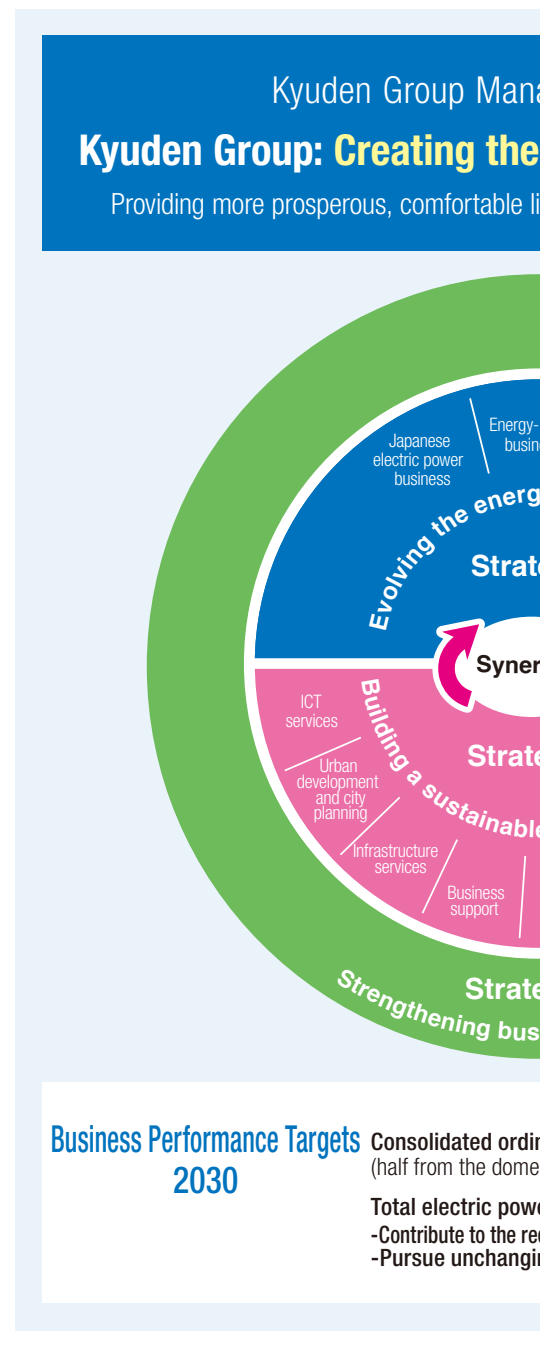
## Major Changes in Our Operating Environment



## INPUT



## Business



Activities

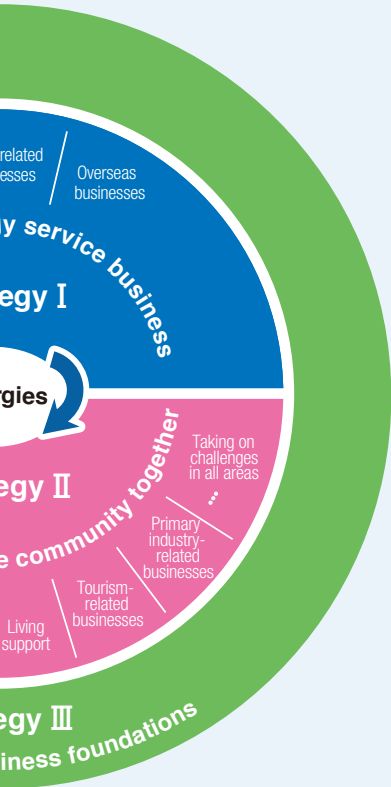
OUTPUT

OUTCOME

Management Vision 2030

Build a bright future, starting from Kyushu

Striving to become our customers' No. 1 choice



Primary income ¥150 billion  
(Domestic electric power business, half from other sources)

Power sold 120 billion kWh  
Reduction requirement of cutting Kyushu's CO<sub>2</sub> emissions by 70%  
by raising top-level electricity charges



Domestic electricity business

Electric power sales  
72.2 billion kWh



Energy-related business/  
overseas electricity  
business  
(Other energy service business)



Optical broadband business/  
data center business, etc.  
(ICT service business)



Urban development/city planning/  
infrastructure services, etc.  
(Other business)

Stable Provision  
of Electric Power

Power outage minutes/  
year/household: **103**  
(FY2018)

Customer-centered  
Energy Services

Electricity/  
gas package contracts  
Approx. **92,000**  
(Gas share in operating  
area relative to major gas  
providers: Approx. **11%**  
(as of March 31, 2019))

Environment-friendly  
Energy

Non-fossil fuel energy  
**43%\*** of total output  
(FY2018)

\*Total of nuclear power, renewable energy (excluding FIT electricity), and hydropower (over 30,000 kW)

Regional Development

Nominal gross regional product  
Approx. **¥45 trillion**  
(**8.2%** of national total)  
(FY2015)

Work-friendly Environment

Average years of service  
**24.0** (all-industrial average, 12.4)  
(FY2018)