

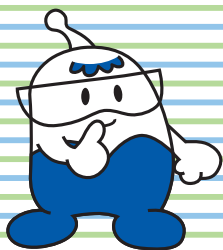


Look, learn and enjoy!

GENKAI ENERGY PARK



Floor Guide



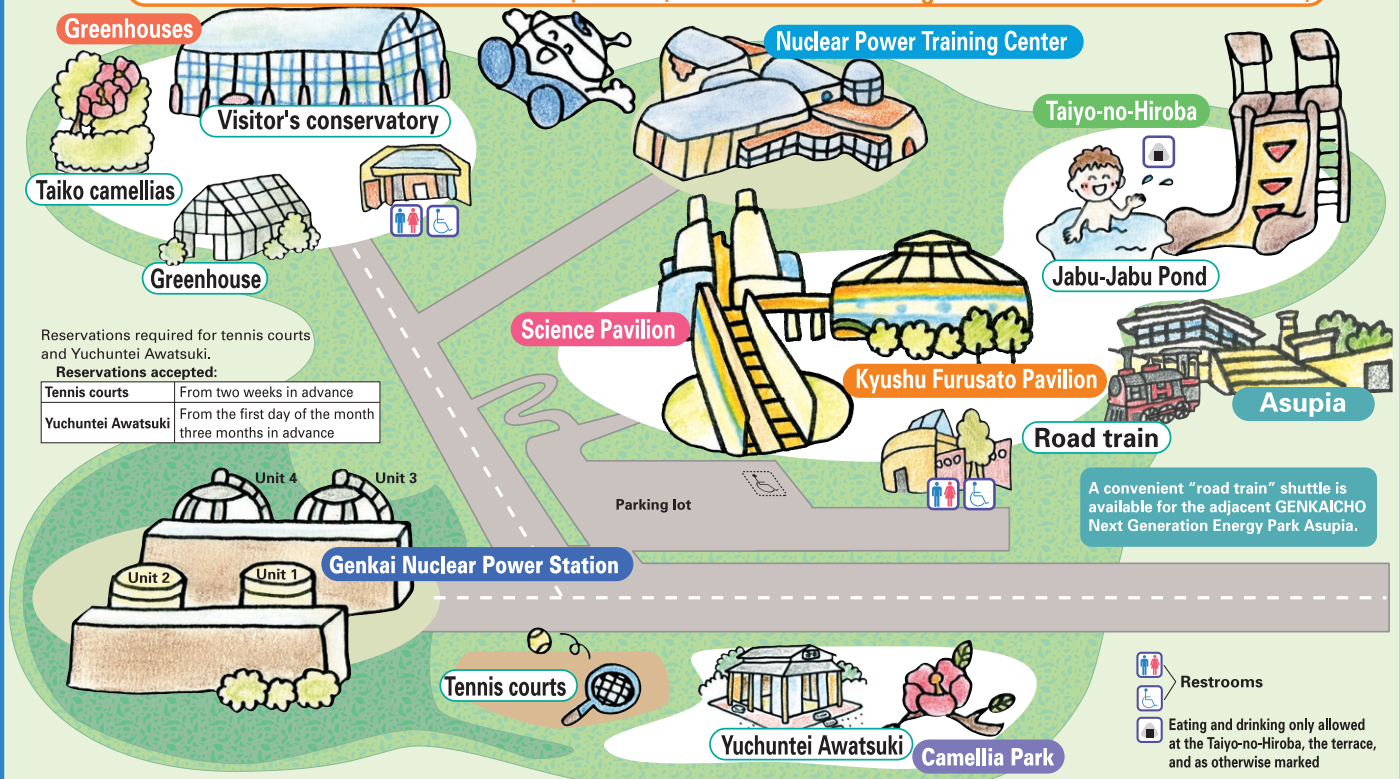
Look, learn, and have fun!

A theme park overflowing with all the energy of Kyushu!

The Genkai Nuclear Power Station is surrounded by beautiful sea and rich natural scenery. The Genkai Energy Park located here contains the Genkai PR Center, an exhibition facility consisting of the Science Pavilion for scientific energy, and the Kyushu Furusato Pavilion with all the energy of Kyushu's people. Outdoor facilities allow one to get in touch with sun, wind, and water throughout the seasons, while sports facilities also await visitors. It is a theme park about energy, whether it comes from people, nature, or atomic power.

Welcome to the Genkai Energy Park

Power station site area: about 870,000m² (or about 13 times larger than Fukuoka Yahuoku Dome)

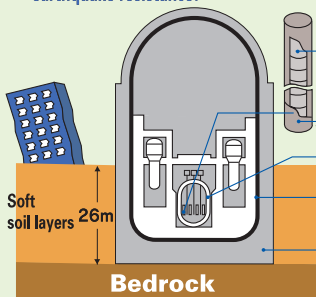


Committed to safe, stable operation!

Genkai Nuclear Power Station

Can supply about 30% of Kyushu's energy needs.

Constructed directly on bedrock for maximum earthquake resistance!



Five barriers prevent the radioactive material from escaping!

- 1st barrier: Pellets (fuel)
- 2nd barrier: Fuel cladding (tubes)
- 3rd barrier: Reactor pressure vessel (steel)
- 4th barrier: Reactor containment vessel (reinforced concrete)
- 5th barrier: Reactor pressure vessel (steel)

Nuclear Power Training Center

Nuclear power plant personnel undergo period training here.



Operation training



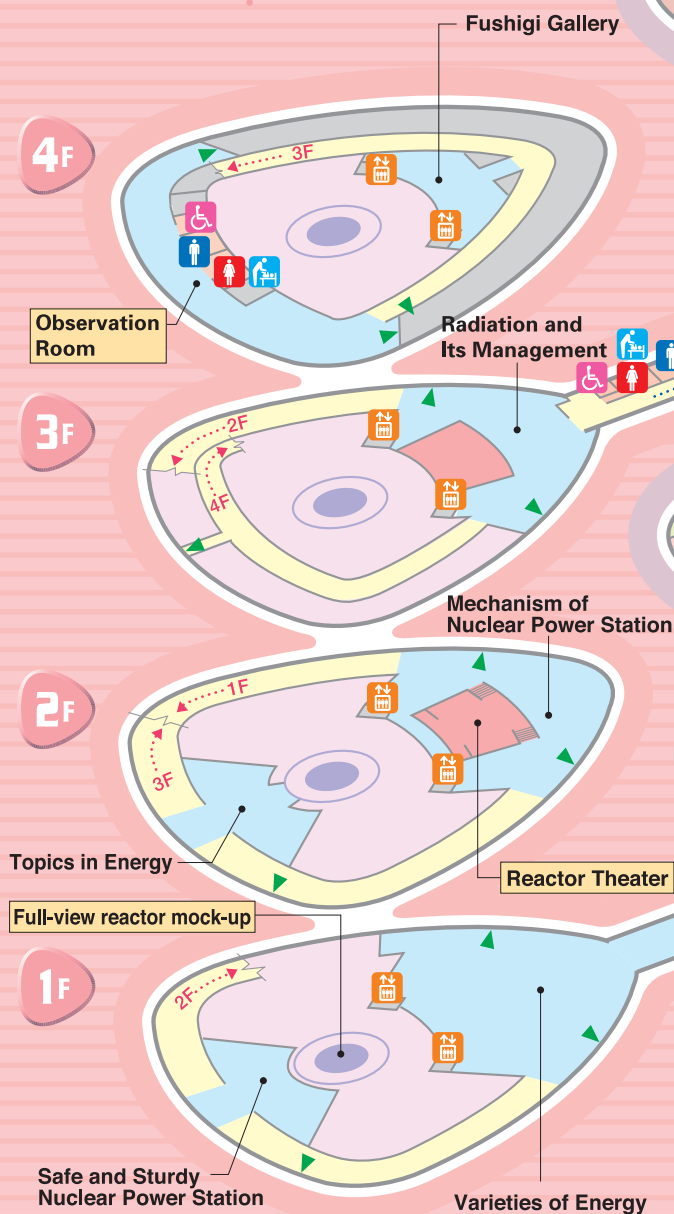
Maintenance and repair training

Science Pavilion



Tour time:
About 1 hour

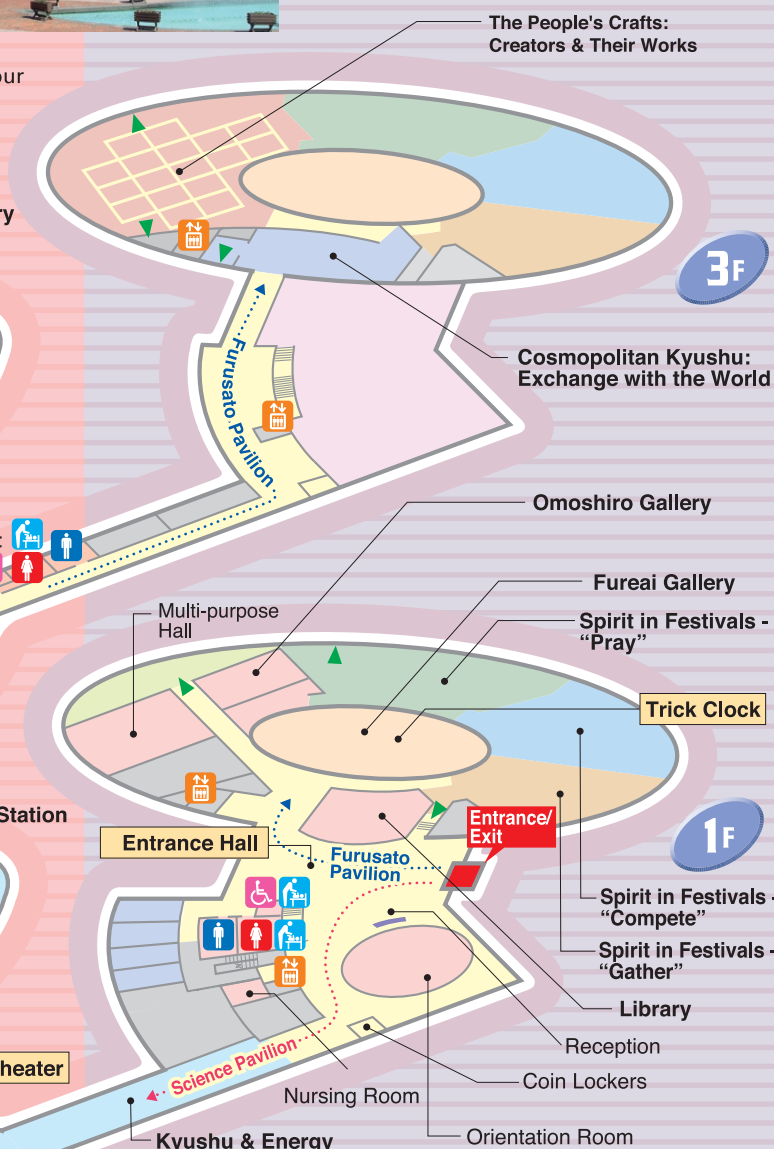
Science Pavilion



- Elevator
- Men's Room
- Ladies' Room
- Diaper changing
- Multi-purpose toilet
- Emergency Exit

Attention: ○Please refrain from eating, drinking or smoking except in designated areas. ◎Small children must be accompanied by adults.

Kyushu Furusato Pavilion



Kyushu Furusato Pavilion

Energy Park Guided Tours

- 10:15 ●10:45 ●11:15 ●11:45
- 13:15 ●13:45 ●14:15 ●14:45

(Tour takes about 30 min. Starting times subject to change.)



Science Pavilion 1F

Adventure into the world of energy

① Kyushu & Energy

Here we can see geothermal energy, nature's generation in Kyushu, as well as the heat & light from the sun and nuclear power.



An audio-visual perspective of "Kyushu & Energy"

③ Full-view reactor mock-up



Full-view reactor mock-up rising high in the center of the pavilion

Science Pavilion 2F

That's what nuclear power generation is



⑤ Mechanism of Nuclear Power Generation

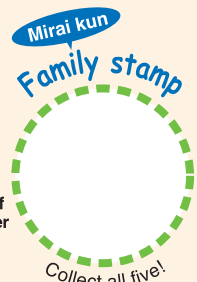
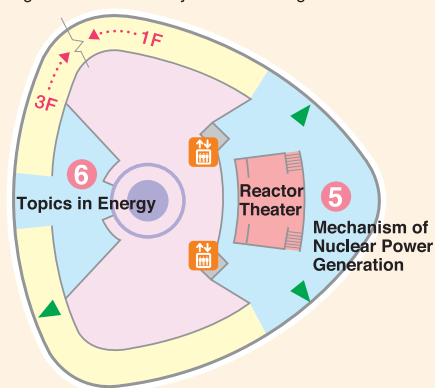
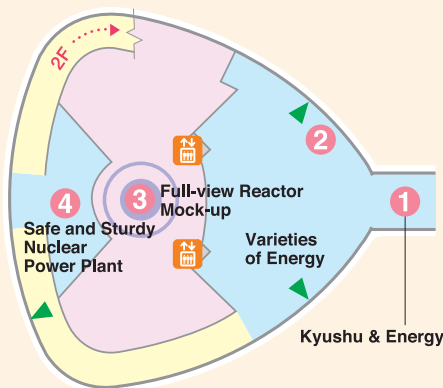
Panels, a theater video and fun games introduce how power is generated and safety ensured.



"Reactor Theater"
Mechanism of nuclear power generation is presented with images by computer graphics, lighting and sound for easy understanding.



"Nuclear Power Game"
Take the quiz, and win the game with correct answers!



② Varieties of Energy

Explains the various methods of generating electricity, why nuclear power is a needed solution to the energy and environmental problems, and efforts to reduce CO2 emissions.



The "Varieties of Energy" panel teaches about power generation through videos and fun games.

④ Safe and Sturdy Nuclear Power Plant

Explains how a nuclear power station is made safe and sturdy and protected from earthquakes.



Reactor containment, a sturdy concrete construction

⑥ Topics in Energy

Introduced here are atomic fuel recycling to repeatedly reprocess and reuse uranium for nuclear power generation.



Full-size mock-up of nuclear fuel assembly

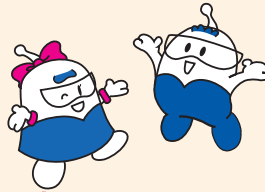


A model of the atomic fuel cycle displays uranium ore and pellets. The monitor screen inside the circle shows a simple introduction to the atomic fuel cycle and the necessity of plutonium use in thermal reactors.



Science Pavilion 3F

What is radiation?



⑧ Radiation and Its Management

Learn about radiation and radioactive substances and see how radiation exists in your everyday life. Varieties of radiation and their use are introduced, as well as radiation control in the nuclear power station.



The amount of radiation around the Genkai Nuclear Power Station is constantly monitored, and is shown on the pictured panel in real-time.

Science Pavilion 4F

Imaginary world and a view of the beautiful Genkai Sea

⑨ Fushigi Gallery

Use the latest digital technology to join in an adventure game, or take a fun quiz with seemingly 3D imagery!

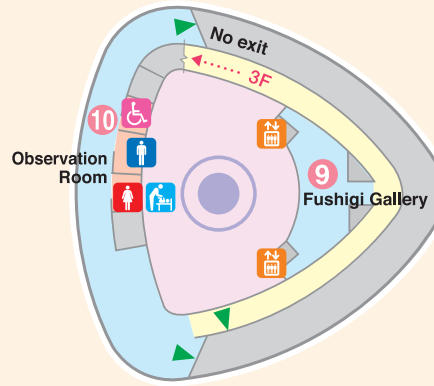
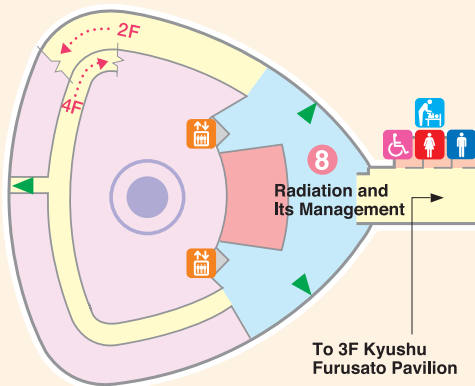


Help the Captain save all the animals in "Rescue Pirates!"



Take the Mirai-kun Pop-up Quiz and learn about the natural environment.

Mirai kun
Family stamp



Mirai kun
Family stamp



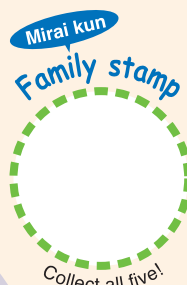
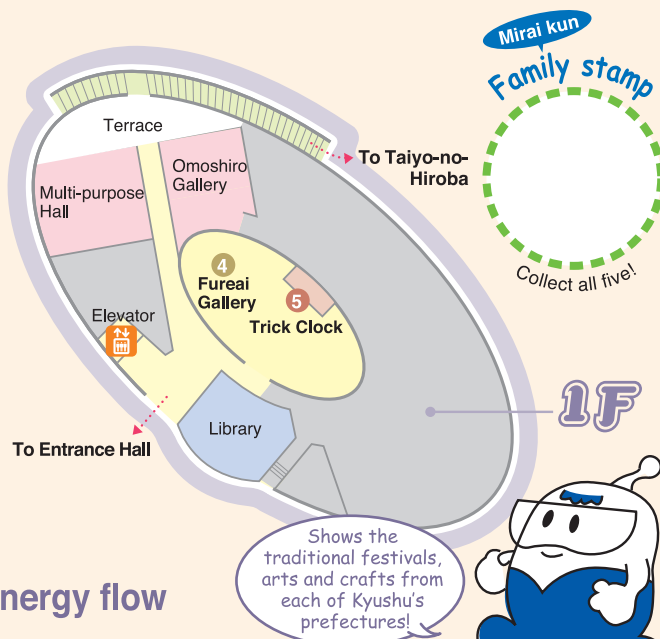
⑩ Observation Room

This is located on the top floor of Science Pavilion, allowing a sweeping view of the beautiful Genkai Sea, the islands of Genkai Quasi-National Park and the Genkai Nuclear Power Station from 47 meters above sea level.



Explains underground disposal of high level radioactive waste.

Kyushu Furusato Pavilion



The people of Kyushu and their powerful energy flow

① Cosmopolitan Kyushu: Exchange with the World

Kyushu has served as a focal point of cultural exchanges between Japan and other countries since ancient times.



② The People's Crafts: Creators & Their Works

Traditional craft products representing each prefecture in Kyushu are all gathered here.



③ Spirit in Festivals

The folk entertainment in Kyushu is divided into three categories of "Pray", "Compete" and "Gather".



④ Fureai Gallery

Provides information on tourist spots and events of Genkai-cho and other areas in Saga Prefecture.



⑤ Trick Clock

Every 30 minutes, this trick clock made with Aritaware beauty delights onlookers.



OTHER FACILITIES

- ◎ **The Visitor's Conservatory**, kept warm with heat from the hot turbine water, allows guests to enjoy themselves in comfort throughout the year.
- ◎ **Tsubaki (Camellia) Park** has an area of 20,000 m², and delights visitors with a wide variety of Tsubaki, about 800 plants of 100 kinds from around Japan.
- ◎ **Yuchuntei Awatsuki** is suitable for various events such as tea ceremonies and haiku meetings (free of charge, reservations required).
- ◎ At the **Taiyo-no-Hiroba**, may be found the "Jabu-Jabu Pond" and many field athletics facilities.



《Taiyo-no-Hiroba》



Fun playground equipment

《Tsubaki Park》



《Yuchuntei Awatsuki》



《Visitor's Conservatory》





Commemorative Stamp



Look, learn and enjoy!

GENKAI ENERGY PARK

● Hours : 9:00 a.m. to 5:00 p.m.

● Closed : Third Monday of every month (following day if holiday)
Winter holiday (Dec.29-Jan.2)

● Inquiries/Phone : 0955-52-6409

Fax : 0955-52-3796

● URL <http://www.kyuden.co.jp>

Genkai Nuclear Power Station, Kyushu Electric Power Co., Inc.

4112-1 Aza-Asago, Oaza-Imamura, Genkai-cho, Higashimatsuura-gun, Saga 847-1441