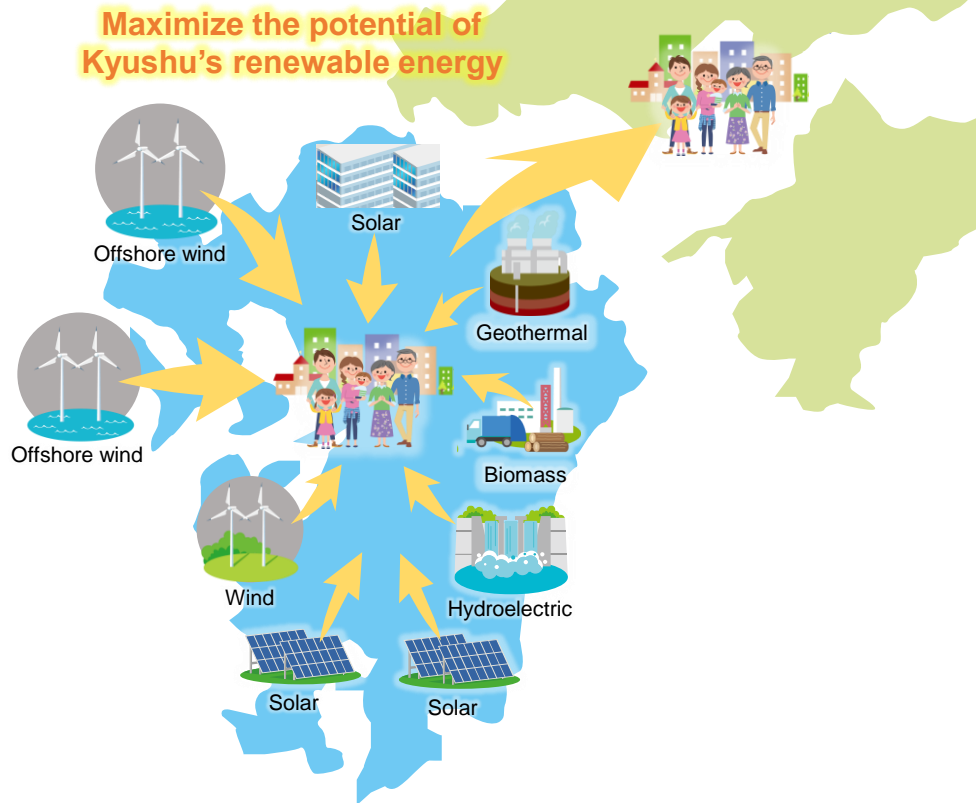


Advanced Transmission and Distribution Network

Grid

- To fully utilize renewable energy potential in Kyushu, we will focus on optimizing transmission capacity and enhancing inter-regional transmission lines and core power grids, guided by the national government's master plan. This will support the cross-regional operation of the transmission and distribution network.
- We will work on advanced technologies for demand-supply management and grid stabilization using digital technology to balance the large-scale adoption of renewable energy while maintaining power quality.

Wide-area operation of the transmission and distribution network



Advancing technologies for demand-supply management and grid stabilization

